

Dunlop BTL Ltd

European Distribution Centre
MPT House
Brunswick Road
Cobbs Wood Industrial Estate
Ashford, Kent. UK
TN23 1EL

Contact us

-  +44 (0)1233 663340
-  +44 (0)1233 664440
-  sales@dunlopbt.com
-  www.dunlopbt.com

Manufacturing Facilities

UNITED KINGDOM

FRANCE

GERMANY

ITALY

SPAIN

POLAND

CZECH REPUBLIC

SLOVAKIA

SERBIA

CHINA

USA



Weld on Hubs	219
Bolt on Hubs	220
Taper Bush Adaptors	221





HUBS & ADAPTORS

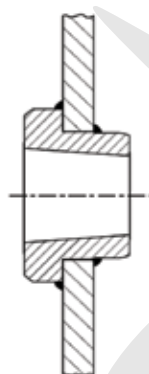


WELD ON HUBS

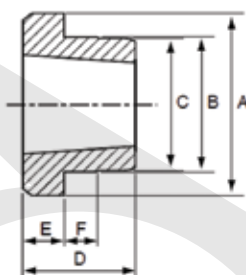
Description

Taper Bore Weld-on-Hubs are made out of steel, drilled, tapped and tapered bored to receive standard Taper Bushes. The extended flange provides a convenient means of welding hubs into fan rotors, steel pulleys, plate sprockets, impellers and other devices which must be firmly fastened to the shaft.

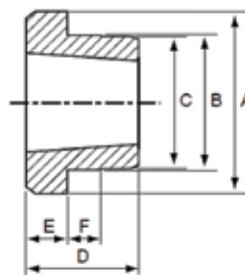
Weld-on-Hubs are easy to install and entirely suitable for use where severe operating conditions are met. Weld-on-Hubs are manufactured to complement the Taper Bush range. All are manufactured from C45 Steel.



Typical Assembly



W Weld-on-Hub



WH Weld-on-Hub

W WELD-ON-HUBS

Hub Reference	Bush Number	A	B	C	D	E	F
W12	1215	73.03	63.50	62.71	38.10	15.88	9.53
W16	1615	82.55	73.03	72.24	38.10	15.88	9.53
W20	2017	101.60	80.90	88.11	44.45	19.05	14.45
W25	2517	127.00	111.13	110.34	44.45	19.05	12.70
W30	3030	149.86	133.35	132.56	76.20	25.40	19.05
W35	3535	184.15	158.75	157.96	88.90	31.75	25.40
W40	4040	225.43	196.85	196.06	101.60	31.75	31.75
W45	4545	254.00	222.25	221.46	114.30	38.10	38.10

WH WELD-ON-HUBS

Hub Reference	Bush Number	A	B	C	D	E	F
WH12	1210	70	65	64.5	25	9	10
WH16-1	1610	80	75	74.5	25	9	10
WH20	2012	95	90	89.5	32	12	12
WH25	2517	115	110	109.5	44	19	15
WH30	3020	145	140	139.5	50	20	15
WH35	3525	190	180	179.5	65	25	25
WH40-1	4030	200	190	189.0	76	32	30
WH40-2	4040	200	190	189.5	101	32	30
WH45-1	4535	210	200	190.5	89	40	30
WH45-2	4545	210	200	190.5	114	40	30
WH50-1	5040	230	220	210.5	102	40	35
WH50-2	5050	230	220	219.5	127	40	35



HUBS & ADAPTORS



BOLT ON HUBS

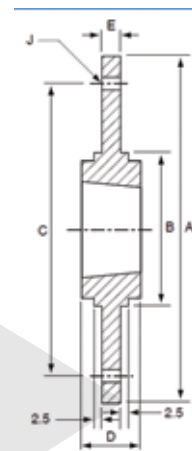
Description

Taper Bore Bolt-on-Hubs are designed for use with the universally accepted Taper Bush. They provide a convenient means of securing fan rotors, impellers, agitators and other devices which must be fastened firmly to shafts.

Challenge Bon-on-Hubs, type BF and SM, complete the range. They are manufactured from GG22 cast iron and are phosphated for extra rust protection.

SM BOLT-ON-HUBS

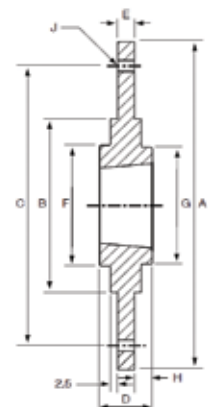
Hub Reference	Bush Number	A	B	C	D	E	J (No. x Diam)
SM 12	1210	180	90	135	26	6.5	6 X 7.5
SM 16-1	1610	200	110	150	26	7.5	6 X 7.5
SM 16-2	1615	200	110	150	38	7.5	6 X 7.5
SM 20	2012	270	140	190	32	8.5	6 X 9.5
SM 25	2517	340	170	240	45	9.5	6 X 11.5
SM 30-1	3020	430	220	300	51	13.5	8 X 13.5
SM 30-2	3020	485	250	340	51	13.5	8 X 13.5



SM Bolt-on-Hub

BF BOLT-ON-HUBS

Hub Reference	Bush Number	A	B	C	D	E	G	H	J (No. x Diam)
BF12	1210	120	80	100	25	5.5	80	10	6 X 7.5
BF16	1610	130	90	110	25	6.5	90	10	6 X 7.5
BF20	2012	145	100	125	32	8.5	100	13	6 X 9.5
BF25	2517	185	130	155	44	11.5	119	20	8 X 11.5
BF30	3020	220	165	190	50	11.5	147	20	8 X 13.5



BF Bolt-on-Hub



HUBS & ADAPTORS



ADAPTORS

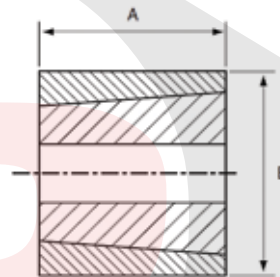
Description

Taper Bush Adaptors are used with mating components that have a parallel bore, allowing them to take a standard Taper Bush that is pre-machined with the required bore and key way size.

This added convenience removes the need to drill, tap and taper-bore.

TAPER BUSH ADAPTORS

Hub Type	A	B	Key Section
1008PM	22	45	-
1008KM	22	45	5 X 5
1210PM	25	60	-
1210KM	25	60	6 X 6
1610PM	25	70	-
1610KM	25	70	10 X 8
2517PM	45	105	-
2517KM	45	105	16 X 10
3030PM	76	130	-
3030KM	76	130	20 X 12
3535PM	90	160	-
3535KM	90	160	22 X 12
4040PM	102	185	-
4040KM	102	185	24 X 12



Adaptors

PM = Plain outside diameter
 KM = Keyway on outside diameter allowing additional torque transmission

Dunlop BTL Ltd

European Distribution Centre
MPT House
Brunswick Road
Cobbs Wood Industrial Estate
Ashford, Kent. UK
TN23 1EL

Contact us

-  +44 (0)1233 663340
-  +44 (0)1233 664440
-  sales@dunlopctl.com
-  www.dunlopctl.com

Manufacturing Facilities

UNITED KINGDOM
FRANCE
GERMANY
ITALY
SPAIN
POLAND
CZECH REPUBLIC
SLOVAKIA
SERBIA
CHINA
USA



TRANSMISSIONS

DUNLOP BTL Ltd, MPT House, Brunswick Road, Cobbs Wood Industrial Estate, Ashford, Kent TN23 1EL, UK
T: +44 (0)1233 663340 • F: +44 (0)1233 664440 • E: sales@dunlopctl.com • W: www.dunlopctl.com

DUNLOP™ and the Flying D device™ are used under licence by DUNLOP BTL Ltd.